



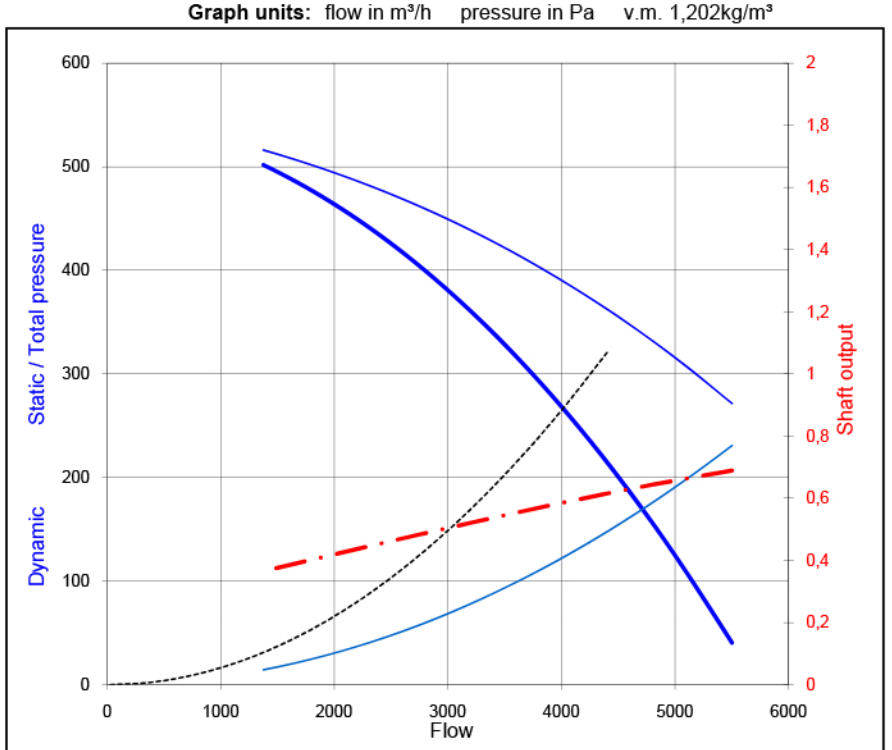
FAN DATA SHEET

Fantype: CV-315/1 V-2008 03o 1-0-1,4

Requested data		
flow	4000 m³/h	
static pressure	265 Pa	1,202 kg/m³

Client:	offer:
Project:	order:
Remarks:	

Operating data		
flow duty point		m³/h
pressure	static	265 Pa
	total	387 Pa
	dynamic	122 Pa
temperature medium		20 °C
specific mass		1,202 kg/m³
power duty point		0,58 kW
efficiency		74 %
velocity	outlet	14,3 m/s
	inlet	14,3 m/s
motor	4 pole	tipspeed
		30 m/s

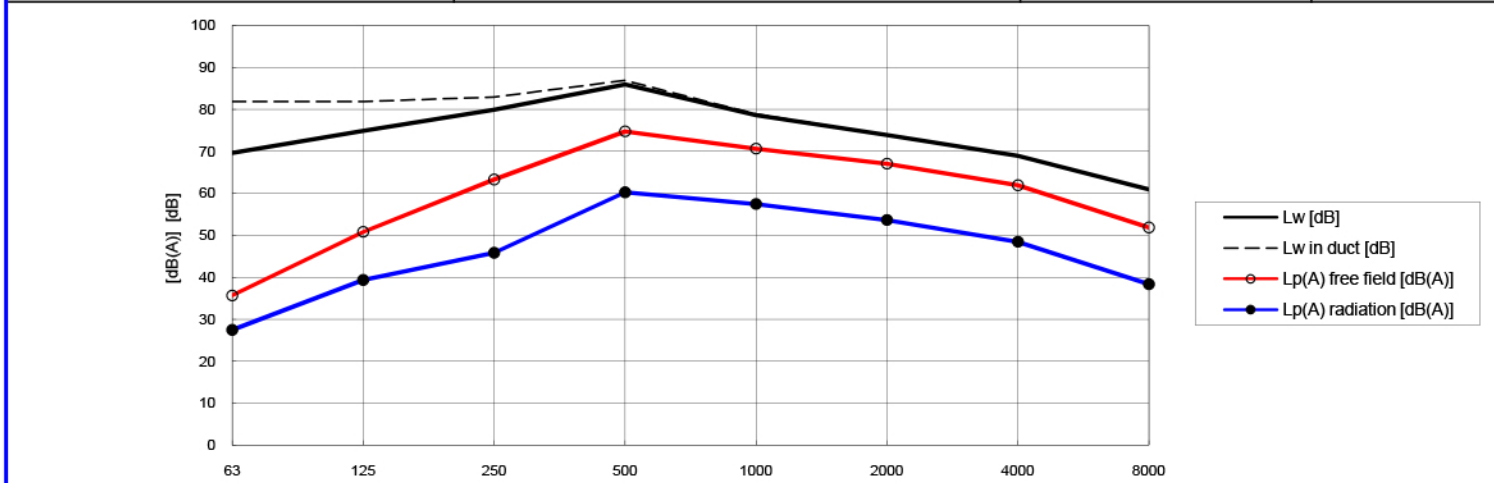


Dimensions			
impeller diam	400 mm	Inertia	0,14 kgm²
approx starting up time DOL			2 sec
type of blades	16x	backward	
material impeller	St37	housing	Alu 226
blade frequency			387 Hz
outlet		diameter	315 mm
inlet		diameter	315 mm

Electric data motor		
power	0,75 kW	4 poles
voltage	230V V	50 Hz
current, full load (In)	5,55 Amp	3,5 Is/In

Noise data

Amount	1	[-]	distance free field	1	[m]	Remarks				
Silencer	none		acoustic isolation		[mm]	no	+ reverberated	no	correction	no



			63	125	250	500	1000	2000	4000	8000Hz	
Sound power level PWL	Lw	88,0	[dB]	70	75	80	86	79	74	69	61
		85,0	[dB(A)]	44	59	71	83	79	75	70	60
Sound power level in duct PWL	Lw	90,5	[dB]	82	82	83	87	79	74	69	61
	Lw(A)	85,9	[dB(A)]	56	66	74	84	79	75	70	60
Sound pressure level free field SPL free in- or outlet	Lp	80,1	[dB]	62	67	72	78	71	66	61	53
	Lp(A)	77,1	[dB(A)]	36	51	63	75	71	67	62	52
Sound pressure level free field SPL radiation housing	Lp	65,9	[dB]	53	55	54	63	57	52	47	39
	Lp(A)	62,9	[dB(A)]	27	39	46	60	57	54	48	38